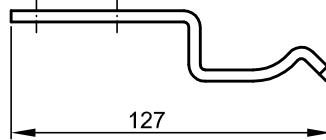
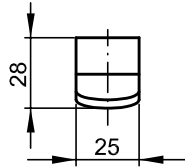


**Stalpol**

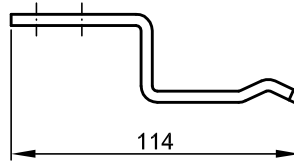
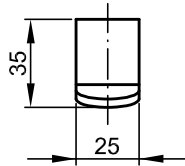


**Zaczepek rolki  
Nr 640.573**

*Powłoka:*  
- Cynkowany

tel. 52/346-41-76; fax. 52/372-62-05; [www.slawpol.bydgoszcz.pl](http://www.slawpol.bydgoszcz.pl); [slawpol@op.pl](mailto:slawpol@op.pl);

**Stalpol**

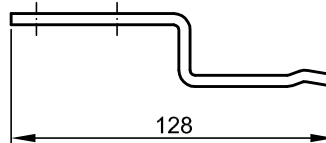
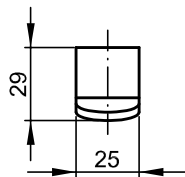


**Zaczepek rolki  
Nr 640.578**

*Powłoka:*  
- Cynkowany

tel. 52/346-41-76; fax. 52/372-62-05; [www.slawpol.bydgoszcz.pl](http://www.slawpol.bydgoszcz.pl); [slawpol@op.pl](mailto:slawpol@op.pl);

**Stalpol**

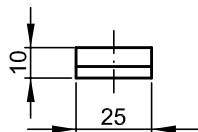


**Zaczepek rolki  
Nr 640.579**

*Powłoka:*  
- Cynkowany

tel. 52/346-41-76; fax. 52/372-62-05; [www.slawpol.bydgoszcz.pl](http://www.slawpol.bydgoszcz.pl); [slawpol@op.pl](mailto:slawpol@op.pl);

**Stalpol**



**Zaczepek rolki  
Nr 640.612**

*Powłoka:*  
- Cynkowany

tel. 52/346-41-76; fax. 52/372-62-05; [www.slawpol.bydgoszcz.pl](http://www.slawpol.bydgoszcz.pl); [slawpol@op.pl](mailto:slawpol@op.pl);